



ROOF PROPOSAL

MAR 16, 2026

We can help you with
Roofing, Cooling, Heating, Solar,
Insulation, Windows & Water Treatment

support@ecosolutionsusa.com - Ecosolutionsusa.com
(928) 782-1011 - ROC #: 332876, 337967, 337966, 340005

ONVIDA HEALTH CANCER CENTER [ROOF REPAIR]

9282103234

2375 Ridgeview Dr
Yuma, AZ
85364

PROPOSAL INTRODUCTION

Thank you for the opportunity to inspect and evaluate the roof system at the OnVida Health Cancer Center. Our team completed a detailed on site inspection, including a full visual assessment, core sampling, and evaluation of the current condition of the existing roofing system.

Based on our findings, the roof shows signs of aging and surface deterioration, including areas of cracking, wear, and membrane fatigue. These conditions indicate that the roof has reached a point where restoration is necessary to prevent future leaks and preserve the integrity of the system.

The existing roofing system remains structurally sound; however, the top membrane has deteriorated to a level where a restoration system is recommended to extend the life of the roof and protect the building.

After evaluating the roof and considering long term performance, our primary recommendation for this facility is a full restoration using a 100% silicone coating system. Silicone provides a seamless, monolithic waterproof barrier that adheres well to existing substrates and is designed for long term durability. It performs exceptionally well in maintaining protection over time and requires less ongoing maintenance compared to other coating systems.

As an alternative, we have also provided an option utilizing an elastomeric coating system with reinforcing fabric. While this system can restore the roof and improve its condition, it is typically considered a more maintenance driven solution and may not offer the same long term performance as silicone.

Based on the condition of the roof and our experience with similar projects, the 100% silicone system provides the best overall value, longevity, and reliability for this facility.

The following proposal outlines both options, including scope of work, installation process, and warranty information to assist in your decision making.

Thank you for considering EcoEnergy Solutions for this project. We look forward to delivering a high quality solution that protects your building and extends the life of your roof system.

Thank you,
Fernando Zavala
EcoEnergy Solutions



ABOUT US

ECOENERGY SOLUTIONS is a **FULL-SERVICE ENERGY EFFICIENCY COMPANY** in air conditioning, roofing, solar energy, insulation, spray foam, windows, and water treatment. We provide our services to both businesses and residential establishments in **Arizona** and **California**.

Our team of experts is committed to offering our clients the best options for a more comfortable lifestyle by enhancing the energy efficiency of their homes or commercial buildings. In conclusion, EcoEnergy Solutions is dedicated to providing our clients with sustainable and eco-friendly solutions that improve comfort, save energy, and reduce their carbon footprint.



EXPERIENCE



CERTIFIED



QUALITY ASSURANCE



CUSTOMER SATISFACTION

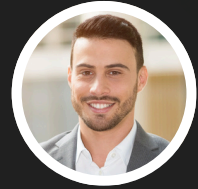
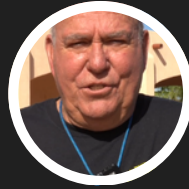


ECOENERGY SOLUTIONS



CUSTOMER SATISFACTION

WHAT OUR CLIENTS ARE SAYING ABOUT US?



I was truly amazed by how quickly they got the job done! The entire team at EcoEnergy has been incredibly kind and professional throughout the process. Their efficiency, attention to detail, and dedication made the experience smooth and stress-free. I couldn't be more satisfied with the results!

LETICIA VALDEZ

OUR CERTIFICATIONS & LICENSES



★ ROC 332876

★ ROC 337967

★ ROC 337966

★ ROC 340005

★ ROC 356402

COOLING • HEATING • DUCT CLEANING • ROOFING • SOLAR • INSULATION • WATER TREATMENT

ON-SITE INSPECTION PHOTOS



Signs of standing water; indicates inadequate drainage or deflection in the roof deck.



Evidence of UV degradation and membrane thinning, compromising the roof's waterproofing



Removal of all loose debris is required to ensure proper adhesion of the new restoration system.



Thorough pressure washing of the entire roof area to remove all contaminants and ensure a high-strength bond for the new coating.



Clearing all loose materials from the roof surface.



Seal and reinforce all mechanical curbs with high-build flashing grade sealant.



A proactive restoration system is advised to address current wear and provide long-term waterproofing.



Clean and seal all mechanical unit curbs with flashing-grade sealant to prevent moisture infiltration at the base.



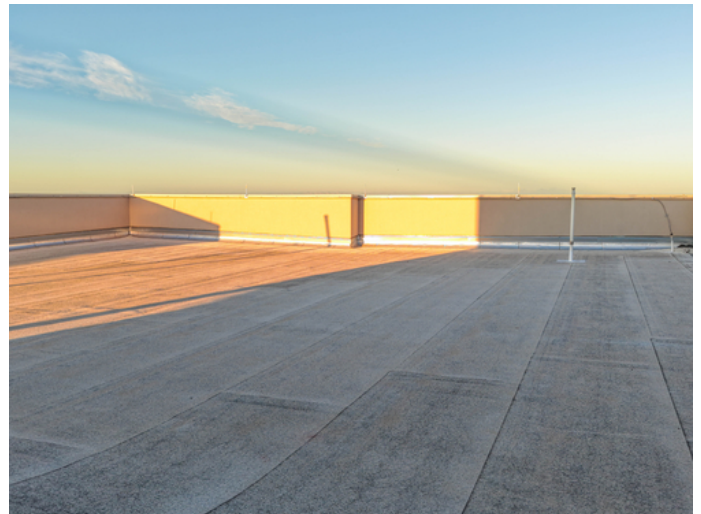
All parapet walls are to be sealed and reinforced specifically up to the termination point of the roofing material.



All pipes, vents, and roof penetrations will be detailed and sealed to prevent moisture entry.



Coating will be applied up the vertical face of all equipment curbs to create a continuous, monolithic waterproof barrier.



All unit curbs will be cleaned, sealed with flashing-grade sealant, and fully coated to prevent leaks at mechanical mounting points.



Complete clearing of all primary drains and scuppers to ensure unrestricted water flow and eliminate ponding.



All parapet walls will be sealed up to the transition of the roofing material.



100% SILICONE ROOF COATING



TOP QUALITY



100% Silicone Roof Coating can be applied over new spray applied polyurethane foam, EPDM, TPO, aged PVC, aged acrylic coatings, concrete, asphalt built-up roofs, granulated modified bitumen roofs and metal roofs.

100% Silicone Roof Coating is a silicone-based, single part roof coating that creates a barrier that is durable, resistant to weathering, breathable, watertight and weatherproof. MuleHide 100% Silicone Roof Coating is manufactured from durable inorganic silicone resins, reinforcing and reflective pigments and silane adhesions promoters.

BENEFITS

- ✓ Lower initial install costs
- ✓ Minimal waste disposal fees
- ✓ Tax rebates & incentives
- ✓ Energy savings from having an energy star rated roof
- ✓ Resistant to periodic ponded water
- ✓ Available in multiple standard colors



BENEFITS

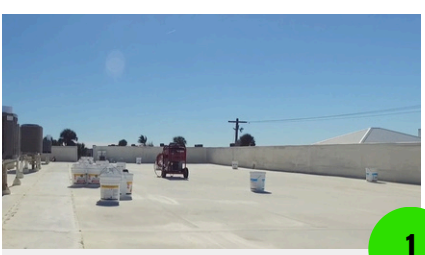




100% SILICONE ROOF COATING



INSTALL PROCESS



1

ROOF WASH SOLUTION

We deep clean the entire roof using a commercial roof wash solution formulated for coating preparation, not standard pressure washing. This ensures proper bonding and long term durability.



2

PRIMER

We apply an acrylic primer across the roof to seal the surface, improve adhesion, and create a uniform base over aged and asphalt based systems.



3

REINFORCEMENT FABRIC

We install polyester reinforcement fabric at seams, curbs, penetrations, and transitions to strengthen high stress areas and prevent future cracking or separation.



4

SILICONE SEALANT

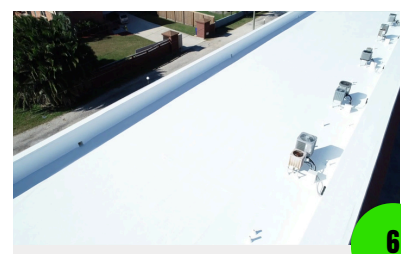
We seal all seams, penetrations, drains, and cracks with liquid applied silicone for a complete watertight finish. We request gallons only for proper application.



5

SILICONE ROOF COATING

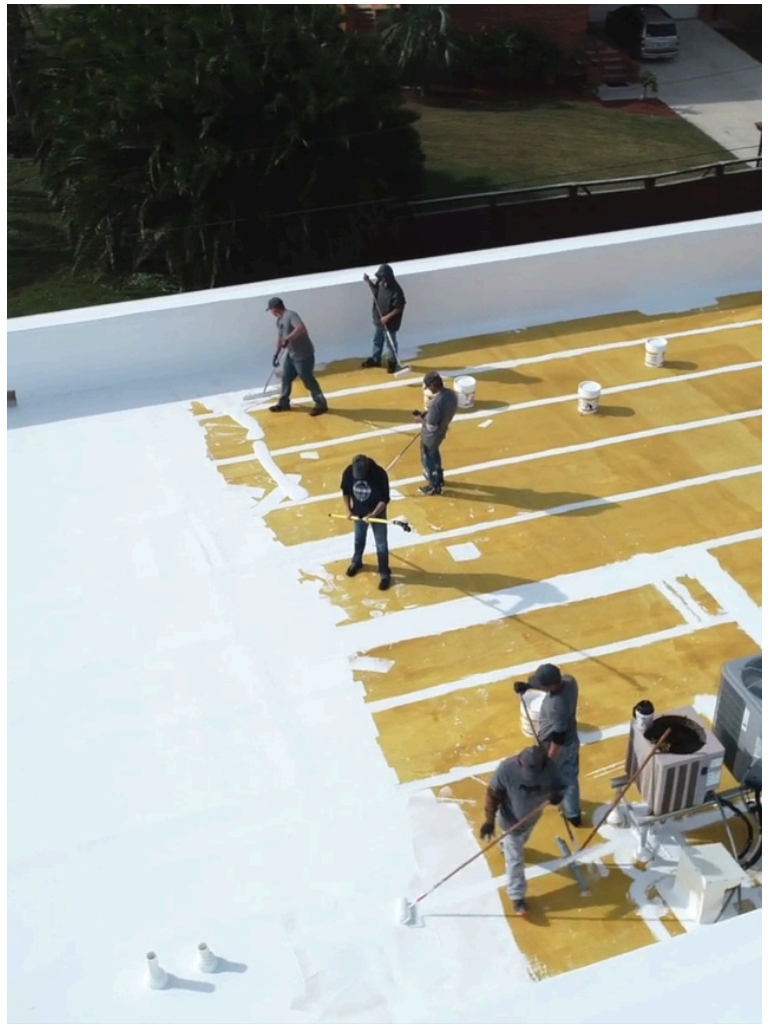
We apply a full field silicone coating at the required mil thickness, creating a seamless waterproof layer that reflects heat and resists ponding water.



6

FINAL VERIFICATION

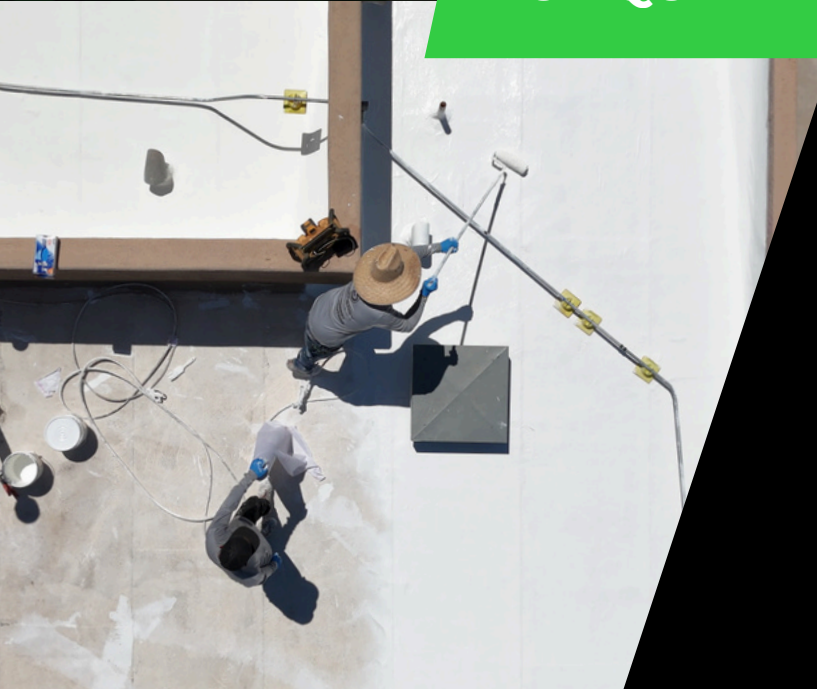
We walk the entire roof to confirm coverage, thickness, and detailing, completing touch ups as needed and documenting everything for quality control.





CRRC® LISTED HIGHLY ELASTOMERIC COATING

TOP QUALITY



Extend the life of your roof while improving energy efficiency. Our elastomeric roof coatings from **EcoEnergy Solutions** provide exceptional durability, UV stability, and long-lasting protection. With a bright white finish, this coating reflects sunlight, lowering roof temperatures and reducing energy use. Keep your building cooler, cut costs, and protect your investment.

As part of every project, we seal all roofing penetrations and scuppers with fiber-reinforced white mastic for added strength and long-lasting performance.

BENEFITS

These are the benefits that elastomeric coatings offer you:

- ✓ Extends roof life
- ✓ UV stable and weather resistant
- ✓ Bright white surface lowers energy costs
- ✓ Seamless protection against leaks
- ✓ Penetrations and scuppers sealed with fiber white mastic
- ✓ Cost-effective alternative to replacement
- ✓ Low maintenance

BENEFITS





100 % SILICONE COATING

Description

Full Roof Restoration with 100 % Silicone Coating

Provide all labor, materials, and equipment necessary to restore the existing asphalt / modified bitumen roofing system with a Mule-Hide 100% Silicone Roof Coating system.

Existing roof must be structurally sound and capable of supporting coating system.

All work performed per current Mule-Hide published specifications.

Site Preparation and Safety

Set up caution tape around the work zone for protection according to OSHA requirements.

Perform a complete roof walk to identify and mark all active leaks, open seams, and areas with deteriorated coating.

Pressure wash (Mule-Hide 115 Cleaner)

All roof surfaces shall be mechanically prepared by removing loose coatings, debris, dirt, and deteriorated materials.

Roof shall be cleaned using Mule-Hide 115 Cleaner (biodegradable detergent).

Cleaner shall be applied undiluted in accordance with manufacturer specifications.

Allow cleaner to dwell, then agitate surface (broom or mechanical scrubber as needed).

Entire roof shall be pressure washed and thoroughly rinsed to remove all contaminants and residue.

Roof surface must be completely dry prior to application of primer or silicone coating.

Surface Preparation and Repairs

Inspect the entire roof for damaged or separated seams and make necessary repairs using three-course mastic with polyester reinforcement fabric.

Seal all pipe boots, vents, and transitions with a compatible high-solids silicone sealant.

Repair cracks, voids, and minor surface imperfections to create a smooth substrate for coating application.

Ensure all scuppers and gutters are clear to allow for full water flow.

Allow all repair materials to cure completely before coating installation begins.

Acrylic Based Primer (Mule-Hide Multibase SB)

Apply Mule-Hide Multibase SB (Solvent-Based) acrylic functionalized base coat to the prepared asphaltic/modified bitumen substrate.

Apply Mule-Hide Multibase SB at a rate of 1.5 gal/sq to the prepared asphaltic surface.

This specialized foundation layer is engineered to provide a chemical "bridge" between the existing asphalt and the new 100% Silicone membrane.

This step is a prerequisite for the Mule-Hide 10-Year System Warranty on asphaltic substrates, providing superior interlaminar adhesion that standard primers cannot match.

100% Mule-Hide Silicone Roof Coating

Apply Mule-Hide 100% Silicone Roof Coating at a rate of 2.5 gal/sq. This creates a monolithic, seamless barrier that encapsulates the entire roof surface, including all transitions and reinforced penetrations.

Installation via high-pressure airless sprayer using a professional cross-hatch technique. This ensures a uniform Dry Film Thickness (DFT) across the entire field, specifically filling the "peaks and valleys" of granulated modified bitumen surfaces.

Unlike acrylic or elastomeric coatings, this moisture-cure silicone is chemically inert and will not degrade, soften, or bubble under permanent ponding water.

Cleanup & Compliance

Complete all work in accordance with State and Local Codes.

Clean work area upon completion, ensuring no materials or debris are left behind.

10 YEAR SILICONE ROOF COATING

10-year Manufacture Warranty on Silicone Coating.

3-year Workmanship Warranty.

Quote subtotal	\$119,850.00
Total	\$119,850.00

ELASTOMERIC COATING

Description

Full Roof Restoration with Mule-Hide A-300 Finish and polyester system.

Provide all labor, materials, and equipment necessary to restore the existing asphalt / modified bitumen roofing system with a Mule-Hide A-300 Finish and polyester system.

Existing roof must be structurally sound and capable of supporting coating system.

All work performed per current Mule-Hide published specifications.

Safety and Surface Preparation

Set up caution tape around the work zone for protection according to OSHA requirements.

Perform a complete roof walk to identify and mark all active leaks, open seams, and areas with deteriorated coating.

Pressure wash (Mule-Hide 115 Cleaner)

All roof surfaces shall be mechanically prepared by removing loose coatings, debris, dirt, and deteriorated materials.

Roof shall be cleaned using Mule-Hide 115 Cleaner (biodegradable detergent).

Cleaner shall be applied undiluted in accordance with manufacturer specifications.

Allow cleaner to dwell, then agitate surface (broom or mechanical scrubber as needed).

Roof surface must be completely dry prior to application of primer.

Surface Preparation and Repairs

Inspect the entire roof for damaged or separated seams and make necessary repairs using three-course mastic with polyester reinforcement fabric.

Seal all pipe boots, vents, and transitions with a compatible high-solids silicone sealant.

Repair cracks, voids, and minor surface imperfections to create a smooth substrate for coating application.

Ensure all scuppers and gutters are clear to allow for full water flow.

Allow all repair materials to cure completely before coating installation begins.

Primer & Fabric Application

Apply roof primer with polyester reinforcing fabric according to manufacturer specifications.

Reinforced fabric helps bridge small cracks and strengthens the overall roof membrane.

Elastomeric Coating Application

Apply Mule-Hide A-300 Finish in two separate coats at a rate of 3.0 gallons per 100 sq. ft. per coat.

This creates a seamless, "liquid-applied" membrane that stretches and contracts with building movement without cracking or blistering.

Cleanup & Compliance

Complete all work in accordance with State and Local Codes.

Clean work area upon completion, ensuring no materials or debris are left behind.

Warranty & Coverage

5-year Manufacture Warranty on A-300 Coating.

2-Year Workmanship Warranty.

Quote subtotal	\$87,550.00
Total	\$87,550.00

AUTHORIZATION

100 % SILICONE COATING

\$119,850.00

Name: Onvida Health Cancer Center [Roof Repair]

ELASTOMERIC COATING

\$87,550.00

Address: 2375 Ridgeview Dr, Yuma, AZ

Estimates valid for 30 days from date of estimate.

Customer Comments / Notes

Onvida Health Cancer Center

Date:

[Roof Repair]:

By signing this form I agree to and confirm the following: I certify that I am the registered owner of the above project property, or have the legal permission to authorize the work as stated. I agree to pay the total project price and understand that this work will be completed in accordance with industry best practices.